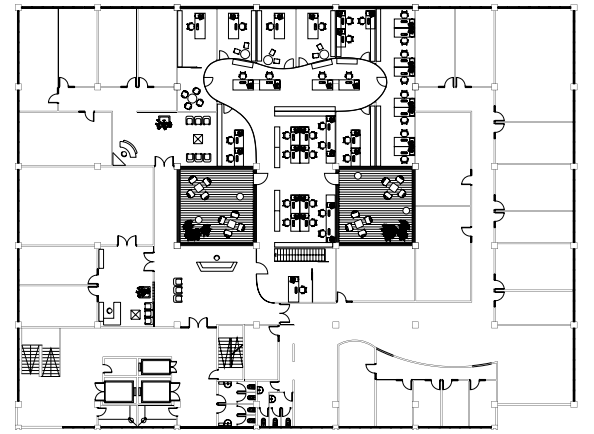




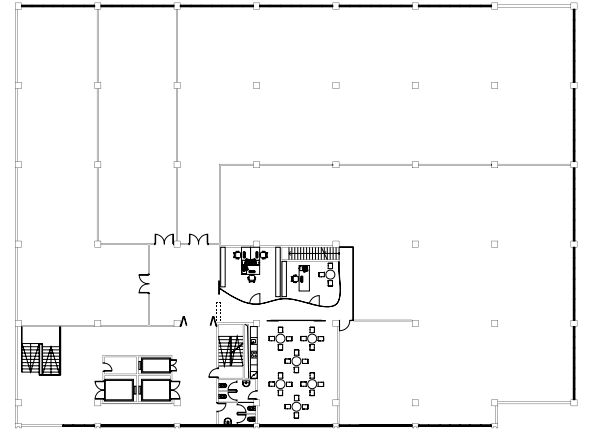
PHARMASWISS FACTORY

Location: Beograd, Serbia
 Clients: Pharmaswiss
 Architect: D3A spol. s r.o. / Fiala - Prouza - Zima
 Authors: Ing. arch. Stanislav Fiala, Ing. arch. Daniela Polubédová
 Collaborators: Ing. arch. Lukáš Pinkava, Milan Bulva
 Contractor: Dřevovýroba Podzimek, RUIINVEST a.s., Spyron s.r.o.
 Construction period: 10/2005 - 11/2006
 Photography: Filip Šlapal

UPPER FLOOR



LOWER FLOOR



0 2.5 5 M

D3A FIALA PROUZA ZIMA: d3a@d3a.cz , Přístavní 5, 170 00 PRAGUE 7, CZECH REPUBLIC





PharmaSwiss

